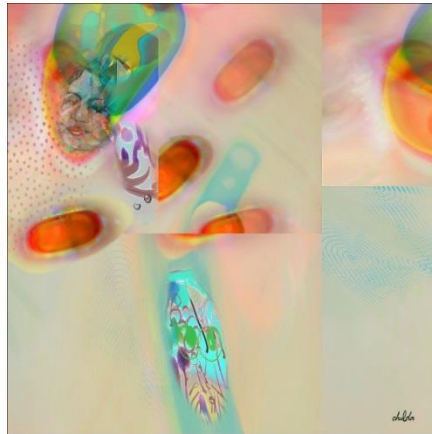


CERES GALLERY  
New York

## Chalda Maloff

### *Rational Exuberance*

April 28<sup>th</sup> - May 23<sup>rd</sup>, 2015



*Words in the Margins*, 2014, Digital Painting, 30" x 30", Ed.3

**Ceres Gallery**, Chelsea, New York City is pleased to announce *Rational Exuberance*, the second solo exhibition of Texas digital artist Chalida Maloff. Maloff's expressive abstractions bring to mind the vastness of outer space as seen through a telescope, and yet with a slight adjustment of ocular focus, a frame might visually dissolve into microscopic particles and cellular matter. The artist seeks beauty and optimism in the expanse between the infinite and infinitesimal.

Informed by celebratory Art Nouveau Jugendstil imagery of fertility and embryonic forms, Maloff examines the fruitful forces of matter and spirit. Her symbolic lexicon of horizons, star clusters, cell membranes, and fingerprints calls attention to persistent patterns of productivity and creativity on every scale.

She chooses the digital medium for its power to combine and synthesize various artistic effects. Primarily using freehand tablet drawing, she produces visuals that would not have been possible using traditional media.

*"With my 'Rational Exuberance' series, I re-engage the dialogue between science and personal reflection, first broached by artists who contemplated the wondrous discoveries in cell biology, electricity, and astronomy."*

Chalda Maloff's work has been exhibited through North and South America and Europe. Recent solo exhibit venues include the Houston Jung Center in Texas and The Morris Graves Museum of Art in California. She holds a doctorate in Human Ecology and resides in Austin, Texas.

*Reception: Thursday April 30<sup>th</sup>, 6-8pm*

For more information please contact:

Stefany Benson, Director

Ceres Gallery

[art@ceresgallery.org](mailto:art@ceresgallery.org)

**547 West 27th St • Suite 201 • New York, NY 10001**

tel 212.947.6100 • fax 212.202.5455 • [www.ceresgallery.org](http://www.ceresgallery.org)